



# 2019 Summer STEM Program for Minority Girls

Lawson State  
COMMUNITY COLLEGE

## 2019 Summer STEM Program for Minority Girls

### Description:

The Girls IMPACT program seeks to encourage minority girls (8<sup>th</sup> through 12<sup>th</sup> graders) to pursue math-related careers by increasing their mathematical proficiency and exposing them to women who are STEM professionals.

### Program Rationale:

Although statistics suggests that boys and girls have similar Algebra I Pass Rates, there are gender differences in the percentage of females ultimately pursuing STEM-related fields. The hope is that Girls IMPACT will not only build girls' confidence in mathematics but increase awareness of STEM career paths and establish mentoring relationships with women who are STEM professionals. Participants will take part in engaging math (Algebra) activities and inspiring seminars by women who are STEM professionals.

### Criteria:

In order for candidates to participate in this **free** summer experience, girls must be rising 8<sup>th</sup> through 12<sup>th</sup> graders. Girls who will be first-generation college students are especially encouraged to apply. Accepted applicants will be notified by e-mail mid May. The program is held at Lawson State Community College (Birmingham, Alabama).

### Dates of program (Thursdays only):

Thursday, June 6, 2019 through Thursday, July 18, 2019 (Thursdays only)

*Note: Excluding the 4th of July holiday*

### Time of program:

10:00 a.m. – 3:00 p.m. (Thursdays only)

*Note: Lunch will be served for Girls IMPACT participants.*

**How to Apply: Go to <http://girlsimpactalabama.org/> and complete the application before **May 1, 2019****

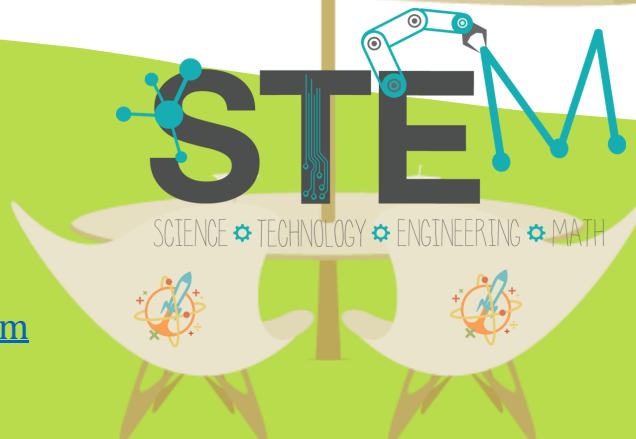


### Questions? Contact:

Dr. Shawanda Thomas

Girls IMPACT Director

E-mail: [girlsimpactalabama@gmail.com](mailto:girlsimpactalabama@gmail.com)



The program is held at Lawson State Community College in the Alabama Center for Advanced Technology and Training (ACATT) Building | 3060 Wilson Road, Birmingham, AL 35221